

## Spotted Towhee

Large sparrow, digs in leaf litter for insects. Has red eyes, white belly, orange sides, and black wings with white spots.



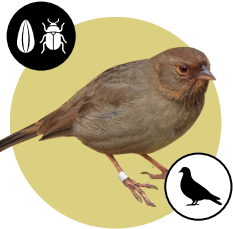
## Northern Mockingbird

Sings often, mimicking songs and calls of other birds. Long tail, in flight, look for large white patches under wings.



## Year-Round Birds of the UCLA Mathias Botanical Garden

Presented in Partnership with:



## California Towhee

Large sparrow, forages in leaf litter for insects, using their legs to dig. Brown overall, rusty orange color under tail.

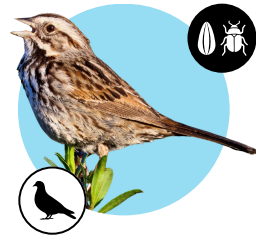


## American Crow

On average, half the size of a raven. Smooth throat feathers, thinner beak than a raven. Tail is fan-shaped in flight.

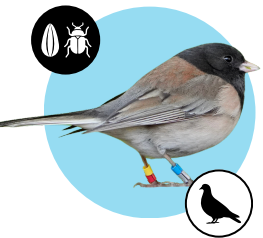
## Song Sparrow

Small and streaky, often found in bushes. Sings from perches, more often in the spring. Can know over 20 songs!



## Common Raven

Scruffy throat feathers, heavier, more curved beak than crow. Tail is wedge-shaped in flight. Call is a deep croak.



## Dark-eyed Junco

Small, black or dark gray head. Hops along the ground looking for insects and seeds.



## Red-tailed Hawk

Characteristic band of darker feathers across light colored chest. Tail is striped and brown in juveniles, red in adults.

### See any juncos with colorful leg bracelets in the garden?

UCLA scientists catch and release juncos with leg bands to help identify individuals and track them over time. This allows scientists to study the behavior, ecology, and evolution of birds in urban environments.

## Great Horned Owl

Nocturnal. Large ear tufts, bright yellow eyes. Characteristic hooting call given at night. Uses talons to hunt rodents.



## Guide to Icons:

### Diet:



Insects



Fruit



Seeds



Animals



Nectar



Multiple Foods

### Location:



Ground



Bushes or Trees



Sky

### Size:

Sparrow Sized

Crow Sized



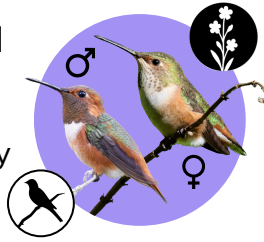
Hummingbird Sized

Robin Sized

Owl Sized

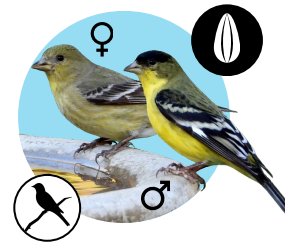
### Allen's Hummingbird

Rusty orange and bronze-green overall. Mature males have shiny red-orange throats.



### Lesser Goldfinch

Males are yellow with solid black cap on head. Females are olive colored and capless.



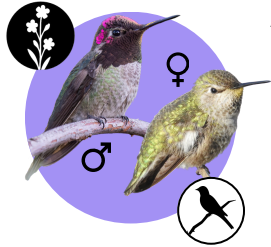
### Nuttall's Woodpecker

Black back with white stripes, white breast with black speckles. Males have a red crest.



### Anna's Hummingbird

Gray-green overall, lack of orange distinguishes from Allen's. Mature males have magenta heads and throats.



### Orange-crowned Warbler

Olive-yellow colored, moves quickly through foliage. No pronounced markings other than faint white eyering.



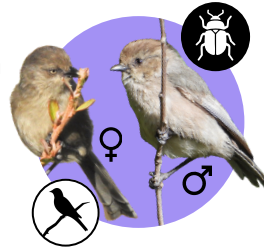
### Red-whiskered Bulbul

Prominent pointed black crest, namesake red "whisker" patch next to eye, white cheeks. Introduced from Asia.



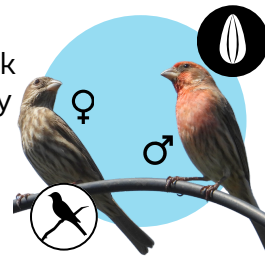
### Bushtit

Small and fast, moves in flocks searching for insects to eat. Females have yellow eyes, males have dark eyes.



### House Finch

Wide, cone-shaped beak for eating seeds. Streaky brown overall; males have a bright red head and chest.



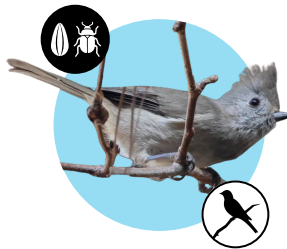
### Yellow-chevroned Parakeet

Very vocal. Lime green, yellow on wings. Forages in trees, especially Silk Floss. Introduced from South America.



### Oak Titmouse

Prominent crest on top of head and slightly larger size distinguish from Bushtit. Usually seen alone or in pairs.



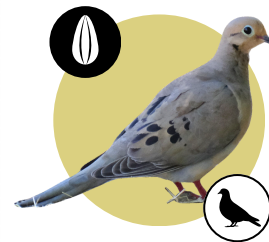
### Western Bluebird

Males are bright blue with rusty orange on their chest. Females and immatures are grayer in color, with paler chests.



### Mourning Dove

Black spots on wings, light blue eye ring. Often seen foraging along the ground in groups. Call is a series of soft cooing.



### Bewick's Wren

Prominent white 'eyebrow' and a long, striped tail. Hops quickly and noisily through bushes, catching insects.



### Black Phoebe

Black body, white breast. Often perched and flicking their long tail, flying from their perch to catch flying insects.



### Band-tailed Pigeon

Named for the faint gray band on their tail. White collar on back of neck, yellow bill with a black tip, and yellow feet.

